





A classic Grade II Listed thatched cottage with an abundance of charm and character, with off road parking and pretty rear garden.

Tenure: Freehold

Size: 1,340 ft²

EPC Rating: D (68)

Council Tax Band: C



3



2



1



1

Services - All mains services are available. Ofcom suggests speeds of up to 1000Mbps are available and that all major mobile networks should have full coverage.

Wilton Town Centre 0.5 Miles • Salisbury 4 Miles • Porton 8.5 Miles • Southampton 27 Miles

41 Shaftesbury Road, Wilton Wiltshire, SP2 0DT

- Thatched Cottage
- Period Home
- Character Features
- Sitting / Dining Room
- Three Bedrooms
- Two Bathrooms
- Off Road Parking
- Pretty Rear Garden

The Property

41 Shaftesbury Road is an attractive three bedroom period thatched cottage, with generous accommodation amounting to c.1,340 sq ft arranged over two floors. The home has numerous period features throughout including feature exposed brick fireplaces, exposed ceiling beams and classic internal cottage doors. Of particular note is the inviting sitting room and dining room, a welcoming room with two fireplaces, extending to 26.8 ft in total. Also on the ground floor is an attractive and good-sized snug, ideal for use as a guest room, home office or secondary reception room, with access from here to the garden via double doors. Completing the ground floor accommodation is the property's kitchen, a large utility room and a guest cloakroom. On the first floor of the home there are three bedrooms, two of which are doubles, and the family bathroom.

Outside

Externally, the home has off road parking for one vehicle parking to the front. To the rear the garden opens to a large patio, which lends itself perfectly to being an outdoor seating area. Beyond is a well-manicured lawn, bordered by mature shrubs and planted trees, with two garden sheds.

Location

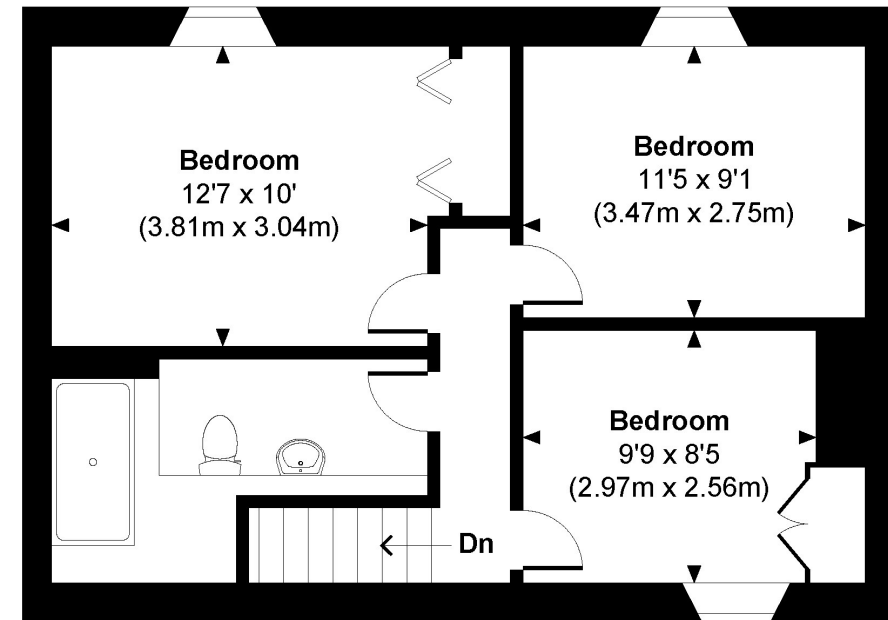
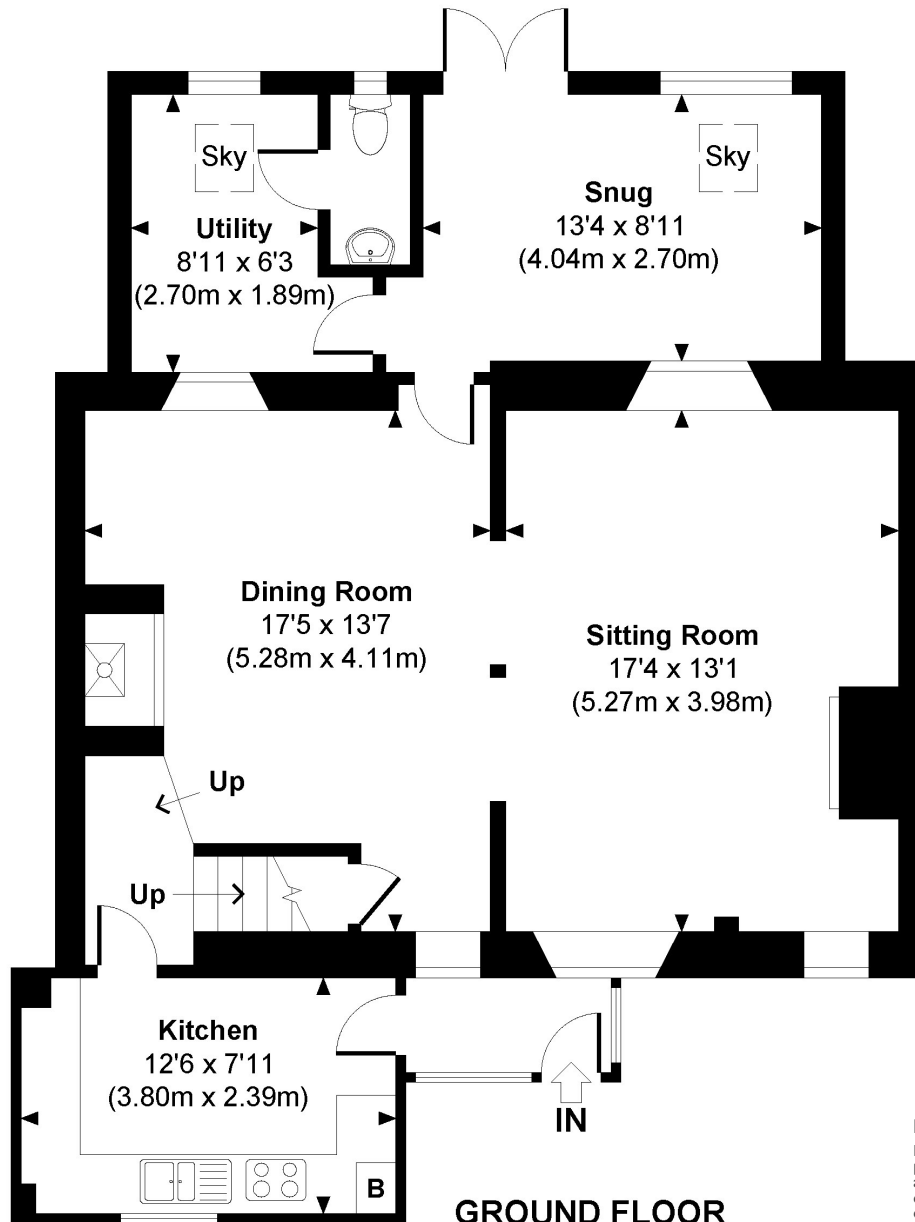
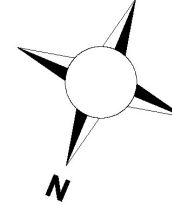
41 Shaftesbury Road is situated in the bustling historic market town of Wilton, which lies approximately 4 miles west of the cathedral city of Salisbury. Wilton itself has good day to day amenities including a bakery, two convenience stores, a doctors, hardware store, post office, library, cafes, pubs and restaurants, as well a weekly market held in 'The Square'. There is a regular bus service to nearby Salisbury, which has an excellent further range of facilities – shopping, leisure, educational and cultural, as well as a mainline train station with direct trains to London Waterloo.



Shaftesbury Road

Approximate Gross Internal Area

Total = 1340 Sq Ft / 124.52 Sq M



Disclaimer Notice

Myddelton & Major and their clients give notice that:- i) they have no authority to make or give any representations or warranties in relation to the property, ii) these particulars do not form part of any offer or contract and must not be relied upon as statements or representations of fact, iii) any areas, measurements or distances are approximate. The text, photographs and plans are for guidance only and are not necessarily comprehensive. It should not be assumed that the property has all the necessary planning, Building Regulation or other consents, and, any services, equipment or facilities have not been tested by the agent, iv) the purchaser must satisfy themselves by inspection or otherwise.